



Bristol, North Somerset  
and South Gloucestershire  
Clinical Commissioning Group

# 2017/18 highlights

Dr Martin Jones

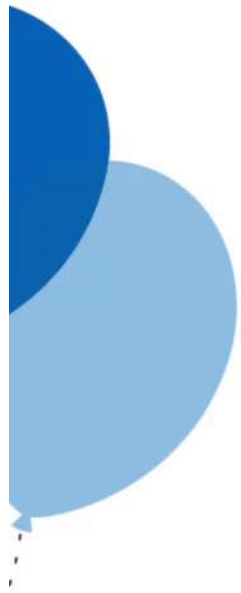
Dr Mary Backhouse

Dr Jonathan Hayes

# Celebrating 70 years of the NHS



# 70 years of the NHS



# 70

**YEARS  
OF THE NHS  
1948 - 2018**



Shaping better health



# HG Wells project: diabetes care

- **Significant issue for Bristol**  
18,500 patients and 35,000 at risk of Type 2 diabetes
- **Complex care pathway** with multiple healthcare practitioners
- **Project aims to join up care** from diagnosis through to treatment and management
- **Better outcomes** and medicines management for patients.



# Primary care delegated commissioning

- **New opportunities** to join up healthcare in our area – primary, secondary, community
- **Supports our ambition** to strengthen and enhance primary care in our area.
- **Welcome endorsement** of our progress in last 12 months.



# Healthy Weston: Engagement and co-design

- **New approach to engaging** and working with people to design services
- **Comprehensive engagement** programme over six months
- **46 public meetings**, 2,500 conversations, ‘night walks’ to engage homeless
- **Trialing new engagement technology** such as ‘clickpads’ for meetings.





# National recognition for integrated care

- **National NHS award** for integrated working in South Gloucestershire
- **‘Multidisciplinary’ teams** targeting most vulnerable older patients
- **Tailored care** with better outcomes through joined-up working between GPs, community matrons, physiotherapists, social workers.



Shaping better health

# Merger and a new commissioning voice for our area

- **A stronger commissioner** better able to drive service improvement and tackle health inequality across our area
- **Six localities** based on natural communities of GP practices.
- **Clinically led**, by the GPs who know patients best.

